




---

## **Report of the Head of Corporate Policy**

---

### **Purpose of the Report**

- 1 The purpose of this report is to provide an update of quarter 3 performance and 2005/06 quartile positions for the authority's corporate priorities, Best Value Performance Indicators (BVPIs) and Public Library Service Standards (PLSSs) relevant to our Corporate Aim, Developing Lifelong Learning.
- 2 Performance for quarter 3, 2006/07 and quartile positions for 2005/06, for indicators aligned to Developing Lifelong Learning are available in Appendix A (corporate priorities) and Appendix B (BVPIs and PLSSs).
- 3 To gain maximum impact of performance management intelligence from Performance Plus, the system requires tolerances and milestones to be set for targets. A zero tolerance is applied alongside graduated milestones, where appropriate, up to the year-end 2006/07.

#### **Key to Tables**

- |  |                                       |  |  |
|--|---------------------------------------|--|--|
|  | increasing, improved performance      |  | performance worse than target (outside tolerance)  |
|  | decreasing, improved performance      |  | performance within tolerance levels                |
|  | decreasing, deteriorating performance |  | performance better than target (outside tolerance) |
|  | increasing, deteriorating performance |  |  |
|  | no change                             |  |  |

#### **Key to Quartile Positions**

- |  |                 |
|--|-----------------|
|  | bottom quartile |
|  | third quartile  |
|  | second quartile |
|  | top quartile    |

#### **Key to Graphs**

- |  |                                |
|--|--------------------------------|
|  | Actual                         |
|  | worse than target performance  |
|  | better than target performance |
|  | Projection - 3 data points     |
|  | Projection - 8 data points     |

### **Priorities for Improvement**

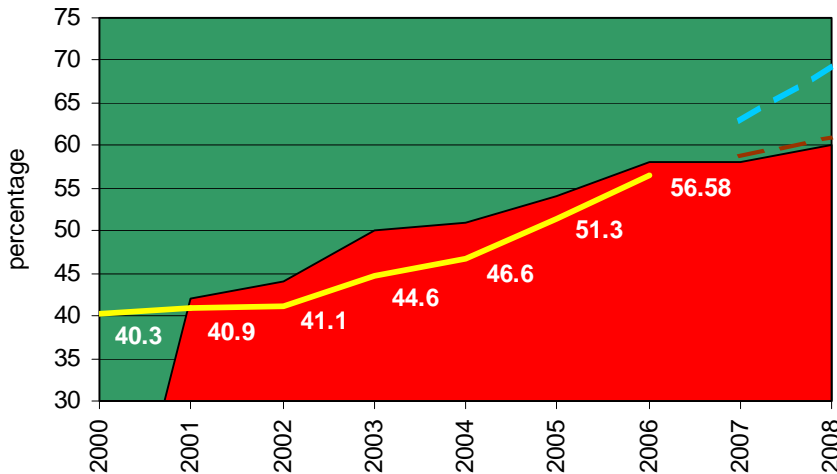
- 4 There is one priority area for improvement aligned to our Corporate Aim, Developing Lifelong Learning.

## Improving Educational Attainment

Within this theme there are 3 outcomes that have been identified as areas we want to improve.

**Better educational attainment at Key Stage 4** – to know if we are succeeding at this we are measuring:

- BV 38 – 5 or more A\*-C GCSE.**

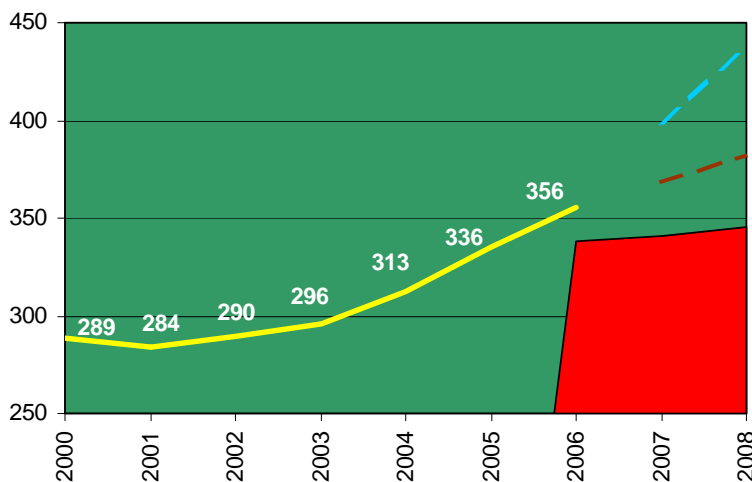


Quartile Position	
2003/04	2004/05
<b>Actual</b>	
56.58	✔
<b>Target</b>	
58.00	▲

The final outturn for children achieving 5 or more A\*-C GCSEs in the summer 2006 examinations, and our BVPI for 2006/07, is 56.58%. Despite not achieving the DFES (Department for Education and Skills) target, performance has continued its improving trend, presently 16.28 percentage points better than the 2000 results.

National quartile positions are now available for 2005/06 and for this indicator performance of 51.3% placed Durham in the 3<sup>rd</sup> quartile. It should be noted that Durham's improvement over 2004/05 was 10.09 % whereas the average improvement for all other English authorities was 5.94%, and 8.33% for bottom quartile authorities.

- LAA C&YP 06a – Average number of points at key stage 4 (stretch target).**





<b>Actual</b>	
355.50	✔
<b>Target</b>	
338.00	●

Following remarks for summer 2006 examinations, the average number of points at key stage 4 has improved further to 355.5. Performance for 2006/07 is more than 5% ahead of the LAA stretch target for this year.

**Better educational attainment of children looked after at Key Stage 4** – to know if we are succeeding at this we are measuring:

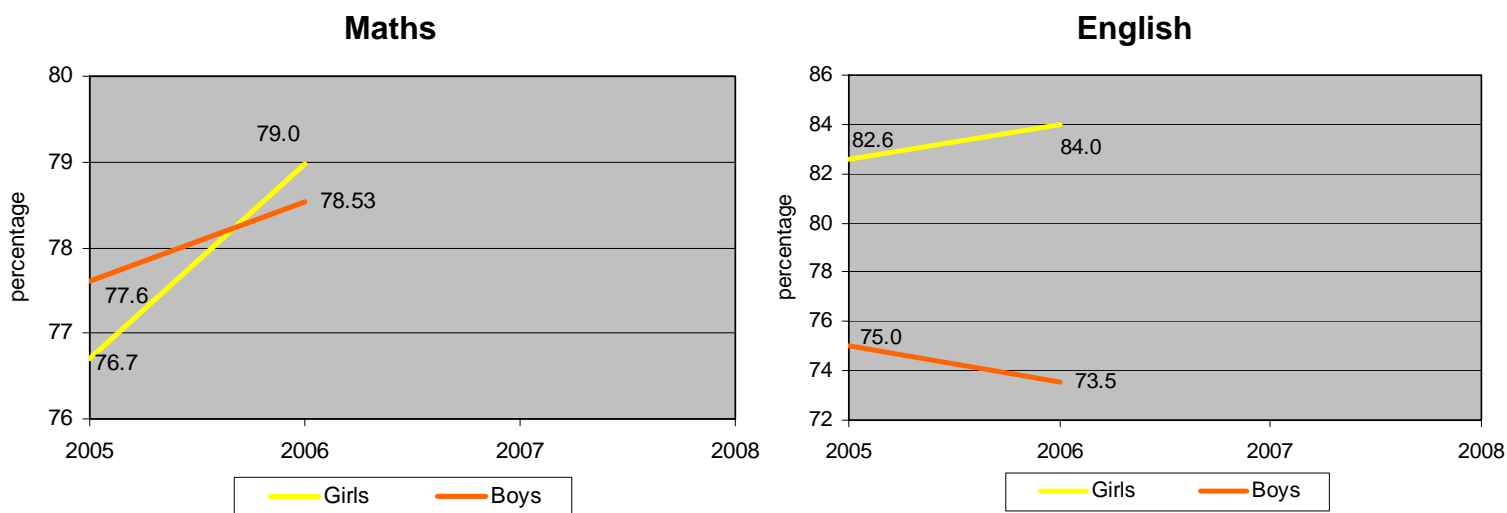
- **PFI 02b - % children leaving care with 5 or more A\*-C GCSE.**

Actual		Target	
8.50		5.00	

Final performance for this indicator has improved further to 8.5%, well ahead of the 5% target for this group for 2006/07.

**Narrowing the gap between boys and girls at Key Stage 2** – to know if we are succeeding at this we are measuring:

- PFI 02c BV040a – Achievement of girls / boys at Level 4, Keystage 2 Maths and English



Following the finalisation of data for summer 2006 results, the gap between girls and boys for KS2 Maths is 0.47 percentage points. Girls are out-performing boys by 10.51 percentage points at KS2 English.

### Other Performance Indicators (PIs)

- 5 There are 25 BVPIs (Best Value Performance Indicators) and 12 PLSSs (Public Library Service Standards) relevant to our Corporate Aim Developing Lifelong Learning, that are not included in the authority's corporate priorities. 20 of these indicators are measured annually and consequently, their performance is not updated at every scrutiny. The remaining 17 indicators are updated and reported on a quarterly basis.

### Indicators reported annually

A proportion of the annual indicators relate to examinations. Provisional results were reported to the previous Lifelong Learning Scrutiny Sub-Committee. During December, these provisional results were finalised, taking into account remarks, missing results, queries etc. Other indicators are taken from annual surveys that are commissioned to take place at various times throughout the year. Consequently, the performance of some indicators has changed.

Performance	Indicator
Improved	PLSS05i - % requests met within 7 days (T) PLSS07 - % users >16 – libraries good / very good (T)
Deteriorated	PLSS05ii - % requests met within 15 days (T) PLSS05iii - % requests met within 30 days (T)
Change to provisional results	39 – 5 A*-G GCSEs inc English and Maths (T) 40 – Level 4 at KS2 Maths 41 – Level 4 at KS2 English 181a – Level 5 / 5+ in KS3 English 181b – Level 5 / 5+ in KS3 Maths (T) 181c – Level 5 / 5+ in KS3 Science 181d – Level 5 / 5+ in KS3 ICT 194a – Level 5 KS2 English (T) 194b – Level 5 KS2 Maths (T)
No updated data	34a - % primary schools >=25% surplus places 34b - % secondary schools >=25% surplus places 43a – SEN < 18 weeks excluding exceptions (T) – <b>100%</b> 43b – SEN < 18 weeks including exceptions (T) – <b>100%</b> 159 – Alternative tuition =>21 hours PLSS10 – replenish time – total lending stock (T) PLSS08 - % users <16 – libraries good

*(T) denotes that the target for that indicator was met*

Of the 20 indicators reported annually, 13 have been updated during quarter 3. 2 indicators improved performance, 2 deteriorated and 9 were modified. The remaining 7 indicators have not been updated during quarter 3.

### Areas of improved performance – Indicators reported annually

- PLSS 05i - % of requests met within 7 days**  
 The annual survey carried out during October 2006 showed that the percentage of requests met within 7 days has further increased to 63%. This is 2 percentage points higher than the previous survey and 13 percentage points above the PLSS standard.
- PLSS 07 - % users over 16 years reporting that libraries are good / very good**  
 Performance of this indicator was taken from the new CIPFA Public Library User Survey (PLUS) that was carried out during November 2006. Performance has further improved on the previous survey and is now 3 percentage points better than the PLSS standard.

## Areas of deteriorated performance – Indicators reported annually

- **PLSS 05ii - % requests met within 15 days**

The annual survey carried out during October 2006 showed that the percentage of requests met within 15 days has decreased to 73%. Although this is 2 percentage points lower than the previous survey, it is 3 percentage points better than the PLSS standard.

- **PLSS 05iii - % requests met within 30 days**

The annual survey carried out during October 2006 showed that the percentage of requests met within 30 days has decreased to 87%. Although, 2 percentage points lower than the previous survey, it is 2 percentage points better than the PLSS standard.

## Changes to provisional results – Indicators reported annually

- **BV 39 - % pupils achieving 5 or more A\*-G GCSEs including English and Maths**

2006 final outturn of 87.71% is a 1.4 percentage point improvement on 2005 results. The latest information from the audit commission, based on the 2005 results, moved Durham County Council from bottom to third quartile for this indicator

- **BV 40 - % of pupils achieving level 4 or above at Key Stage 2 Maths**

Final outturn for this indicator is 1.55 percentage points better than 2005. This indicator maintained a second quartile position based on the 2005 results.

- **BV 41 - % of pupils achieving level 4 or above at Key Stage 2 English**

2006 final outturn is worse than both the 2006 target and 2005 outturn. Based on 2005 performance, the authority maintained its second quartile position.

- **BV 181a - % of pupils achieving level 5 / 5+ in Key Stage 3 English**

2006 outturn has been finalised and although it is almost 2 percentage points higher than originally reported, performance is almost one percentage point lower than 2005 and almost 8 percentage points worse than target. Based on results from 2005, Durham County Council dropped from second to third quartile

- **BV 181b - % of 14 year old pupils achieving level 5 / 5+ in Key Stage 3 Maths**

There has been a slight downward adjustment to the 2006 outturn but performance is still better than target and is 3.85 percentage points higher than 2005.

- **BV 181c - % of 14 year old pupils achieving level 5 / 5+ in Key Stage 3 Science**

Even though there has been a slight increase in the performance of this indicator, the 2006 target was not met. Based on 2005 outturn Durham County Council moved from third to second quartile as it improved at a greater rate (4.04 percentage points) than the average of English authorities (3.76 percentage points).

- **BV 181d - % of 14 year old pupils achieving level 5 / 5+ in Key Stage 3 ICT**  
Outturn for 2006 has been finalised at 71.74%, with 2006 performance 1.73 percentage points higher than 2005. However, during 2005 the average improvement for English authorities was 2.55 percentage points and as a consequence Durham County Council has dropped from the top to second quartile.
- **BV 194a - % of 11 year old pupils achieving level 5 Key Stage 3 English**  
Performance of this indicator for 2006 has been finalised and is slightly higher than originally reported. Therefore 2006 performance is 6.68 percentage points higher than in 2005 and 2.68 percentage points above the 2006 target. Based on 2005 performance, Durham County Council has maintained a third quartile position.
- **BV 194b - % of 11 year old pupils achieving level 5 in Key Stage 2 Maths**  
Although, 2006 outturn has decreased slightly due to the adjustments, it is 1.62 percentage points higher than the 2006 target and 2.62 percentage points higher than the 2005 outturn.

#### Indicators reported quarterly

Performance	Indicator
<b>Improved</b>	46 – % half days missed – primary schools 170c – pupils visiting museums and galleries (T) PLSS09 – Annual items added per 1,000 population (T)
<b>Static</b>	220 – library standards checklist 222a – Quality EY&C leadership – leaders 222b - Quality EY&C – postgraduate (T) PLSS01 – households within 2 miles of library (T) PLSS02 – scheduled opening hours per 1,000 population (T) PLSS03 – static libraries with internet (T) – <b>100%</b> PLSS04 – No. of workstations per 10,000 population (T)
<b>Deteriorated</b>	PLSS06 – physical visits to libraries per 1,000 population 45 - % half days missed – secondary schools (T) 50 – children leaving care – 1 A*-G GCSE 170a – visits to / usage of museums (T) 170b – visits to museums in person
<b>Measured Cumulatively</b>	221a – Youth Work: Recorded Outcomes 221b – Youth Work – Accredited Outcomes (T)

*(T) denotes that the target for that indicator was met*

Of the 17 indicators reported quarterly, 3 improved performance, 5 deteriorated, 7 remained static and 2 indicators are measured cumulatively and so can not be compared to previous data.

## Areas of improved performance – Indicators reported quarterly

- 6 The performance of a number of indicators improved during quarter 3, 2006/07. Of particular note:
- **BV 46 - % half days missed – primary schools (estimate)**  
Although, quarter 3 performance is estimated to be a slight improvement on quarter 2, performance is not meeting the set target. Final performance of this indicator will be reported to the Lifelong Learning Scrutiny sub-committee of the 25 June 007.
  - **BV 170c – No. of pupils visiting museums and galleries per 1,000 population**  
The number of pupils visiting museums and galleries has increased by 3,811 (22%) and performance is 30% better than target.
  - **PLSS 09 – Annual items added per 1,000 population**  
Performance of this indicator is continuing to improve and is significantly better than the PLSS standard.

## Areas of deteriorated performance – indicators reported quarterly

- 7 The performance of a number of indicators deteriorated during quarter 3, 2006/07. Of particular note:
- **PLSS 06 – Physical visits to libraries per 1,000 population**  
Four samples are carried out each year (the latest one was in September 2006) and this indicator is calculated from the average of the previous 4. The authority has experienced poor results from some samples (due to, for example, inclement weather on the day of the sample) and this has reduced performance.
  - **BV 45 - % half days missed – secondary schools (estimate)**  
Although, quarter 3 performance is estimated to have deteriorated slightly compared to quarter 2, performance is within target and is an improvement on 2005/06. Final performance of this indicator will be reported to the Lifelong Learning Scrutiny sub-committee of the 25 June 007.
  - **BV 50 – children leaving care – 1 A\*-G GCSE**  
Although this indicator is showing deteriorated performance it should be noted that this indicator is prone to fluctuations. Due to the small number of looked after children eligible to take GCSE examinations, each child leaving care has a disproportionate effect (positive or negative) on the overall indicator
  - **BV170a – visits to / usage of museums per 1,000 population**  
Quarter 3 performance is better than the PLSS standard although fewer visits to / usage of museums took place. This decrease can be attributed to a change in the way website hits are counted. Based on 2005/06 data, this indicator maintained a top quartile position.
  - **BV 170b – visits to museums in person per 1,000 population**  
Although the number of visits to museums in person has decreased, performance is still higher than 2005/06. Bowes museum is undergoing repair work and so scaffolding has been erected around the building causing a decline in visitors.

## Performance measured cumulatively

Some performance indicators are measured cumulatively rather than on a rolling year basis.

- **BV 221a – Youth Work: Recorded Outcomes**

To date, almost 47% of young people aged 13-19 have gained a recorded outcome as a result of their participation in youth work. Although, performance equates to only 3 quarters, this is an improvement of 4.89 percentage points on final outturn of 2005/06. Performance to date has almost achieved the year-end target of 50%.

- **BV 221b – Youth Work: Accredited Outcomes**

More than 28% of young people aged 13-19 have gained an accredited outcome as a result of their participation in youth work. This is an improvement of 5.37 percentage points on 2005/06 outturn and is 2.37 percentage points better than the year-end target of 26%.

## Indicators that have not been updated during Quarter 3

Performance of the following indicators has not been updated since the last Lifelong Learning Scrutiny Sub-committee;

- **BV 034 - surplus places in schools.** Performance of this indicator will not be confirmed until April 2007 at the earliest. Capacity figures and pupil numbers (from the schools census, the data of which is being checked for accuracy) for each individual school will not be available until March 2007.
- **BV 220 – Library standards checklist.** This indicator is calculated annually. It will be influenced by the CIPFA Children's Survey but as this will not be undertaken until Summer 2007, performance of this indicator will remain static for 2006/07.
- **PLSS08 - % users <16 – libraries good.** Performance is calculated from CIPFA Children's survey undertaken in 2004 and is a composite of 3 different questions. A new survey form is due to be undertaken during the Summer 2007 and asks a specific question "What do you think of your library service?"

## Recommendations

That Corporate Scrutiny Sub-Committee Members:

- (i) note the contents of this report
- (ii) agree to receiving subsequent quarterly performance progress reports

---

**Contact: Debra Kitching**

**Tel: 0191 383 4186**

---